

# GX-i Print Server for the Versant™ 180 Press

Easy-to-use print server to boost productivity

## SUPERB SPEED AND IMAGE QUALITY

This print server is ideal for professional and quick-print environments as well as corporate offices in which speed and ease-of-use are needed to boost productivity and efficiency. Featuring a simple user interface, versatile media handling and automated RGB colour correction, this GX-i Print Server employs the developed architecture by Fuji Xerox to reduce RIP load and a RIP Accelerator Board to maintain image quality through high-speed, lossless compression. In addition, fast serial transmission accelerates processing of heavy image data.

## EASY, INTUITIVE USER INTERFACE AND ADVANCED FUNCTIONS

The user interface ensures fast, easy job setup and operation for any user. Printer functions, job status, error messages and other vital information can be seen at a glance on the print server display. The end result is smoother operation with better accuracy.

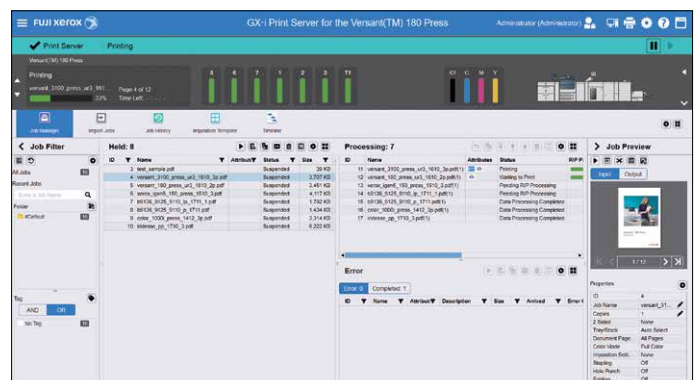
The server also comes with a variety of functions for easier printing such as Print Station, which features an easy-to-read navigation bar divided into five main areas for simple control of all print operations from one screen. Hot Folder allows folders to be assigned different print settings, which are automatically applied to documents sent to the folders. Moreover, Versant™ 180 Press handles a wide variety of media, giving you the means to create professional looking documents for any business requirement.

## REALISES SMOOTHER GRADATION CORRECTION

The gradation realised by 10-bit rendering is expressed smoother. Additionally, the gradation correction function results in excellent gradation for more natural, smoother reproduction.

## OUTSTANDING PHOTO REPRODUCTION

GX-i Print Server for the Versant™ 180 Press makes it easy for even inexperienced users to fine-tune the look of photos. Correct skin tones and sky colour, or emphasise certain images characteristics like details, vibrancy or overall balance. You can also adjust the image to match the type of scene or subject, such as portrait, scenery or indoor environments. For complete automatic operation, choose one of the auto correction modes and let the print server optimise the image depending on the photo.



# GX-i Print Server for the Versant™ 180 Press

## PLATFORM

- Model: A-SV02

## KEY FEATURES

- Print Station
  - Main UI software for GX-i Print Server
- JDF v1.2\*
  - Enables GX-i Print Server integration with JDF workflow
- \*For software we support, please contact your local Fuji Xerox representative.
- APPE v3.9 / 4.7\*
  - Enables GX-i Print Server to RIP and integrate with PDF workflow
- \*Optional.
- Color Profile Maker Pro (CPMP)
  - A colour management feature to create and adjust CMYK device link profiles
- Job Director - Imposer
  - An imposition layout feature easily operated from Print Station UI
  - Readymade template
- Job Director - Sequencer
  - A job editing feature with simple, visual UI

- PS Preflight
  - Checks errors or use of inappropriate font or colour
- Raster Image Viewer
  - Displays job preview to edit, adjust curve or brightness
- Warning / Detection
  - Prevent errors when using RGB, spot colour, total ink coverage, hairline and overprint.
- Logical Printer
  - Supports ability to create Hot Folders and logical printers
  - The hot folder relieves the user of the repetitive task of configuring print settings for multiple jobs and allows the direct printing of files without need for an application.
- Security
  - User password control
  - GX-i Print Server security (log-in) protocol makes shared locations accessible only to authorised users

## OPTIONS

- Ripped PDF Export Kit
- JDF Kit
- APPE Kit
- i1Pro 2 Kit

## Print Server [GX-i Print Server for the Versant™ 180 Press]

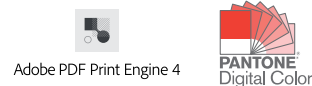
Item	Description
Type	Main unit built-in type
CPU	Intel® Core™ i3-4330 Processor (3.5 GHz)
Storage device	Hard disk : 1 TB
Memory capacity	16 GB (Max : 16 GB)
Server Operation System	Windows® 10 IoT Enterprise (64bit)
Page Description Language	Adobe® PostScript® 3™, PPML
Print Data Format	PS, PDF, EPS, TIFF, JPEG
Supported Operating System	Windows® 10 (32bit) Windows® 10 (64bit) Windows® 8.1 (32bit) Windows® 8.1 (64bit) Windows® 7 (32bit) [Service Pack 1] Windows® 7 (64bit) [Service Pack 1] Windows Server® 2016 (64bit) Windows Server® 2012 R2 (64bit) Windows Server® 2012 (64bit) Windows Server® 2008 R2 (64bit) [Service Pack 1] Windows Server® 2008 (32bit) [Service Pack 2] Windows Server® 2008 (64bit) [Service Pack 2]

Item	Description
Supported Operating System	macOS 10.13 High Sierra macOS 10.12 Sierra OS X 10.11 El Capitan OS X 10.10 Yosemite OS X 10.9 Mavericks Mac OS 9.2.2
Interface	Ethernet : 1000BASE-T / 100BASE-TX / 10BASE-T x 2 USB : USB3.0 x 2 , USB2.0 x 2
Network Protocol	TCP/IP(lpd / FTP / IPP <sup>*1</sup> / SMB / JDF / HTTP), AppleTalk <sup>*2</sup> , Bonjour
Power Supply	AC100-240 V +/- 10 % , 2.5 A (100 V) / 1.1 A (240 V), 50/60 Hz common
Maximum Power Consumption	0.43 kW
Dimensions	W 290 x D 135 x H 318 mm
Weight	8 kg

\*1: Used to work with FreeFlow® Digital Workflow Collection.

\*2: AppleTalk is not supported by Mac OS X 10.6 Snow Leopard or later.

PANTONE® and other Pantone trademarks are the property of Pantone LLC.  
All product names and company names mentioned in this brochure are trademarks or registered trademarks of their respective companies.  
The product specifications, appearance and other details in this brochure are subject to change without notice for improvements.



For more information or detailed product specification, please call or visit us at

## Fuji Xerox (Hong Kong) Limited

11/F Cityplaza 4, 12 Taikoo Wan Road, Quarry Bay, Hong Kong  
Tel. 852-2513-2513

<http://www.fujixerox.com.hk>

