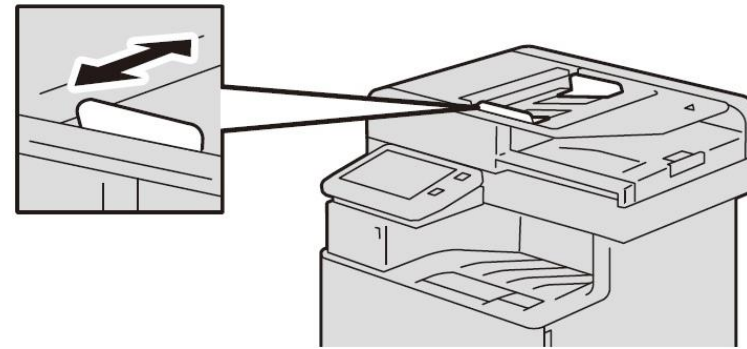


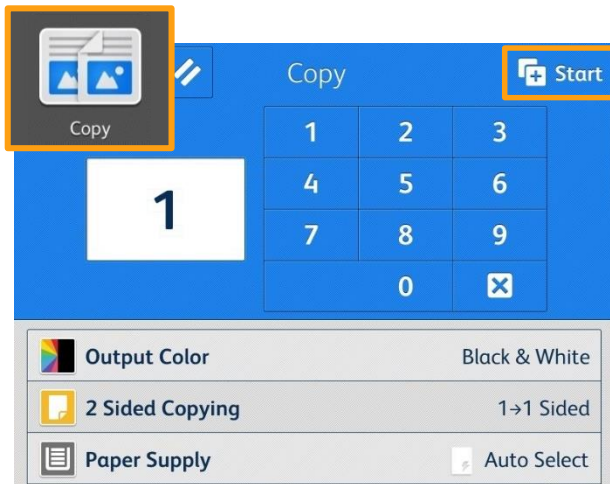


**No. and Component**

- 1 <Reset> button
- 2 <Power> button
- 3 <Home> button
- 4 Data indicator
- 5 <Jobs> button
- 6 Note on status display lamp
- 7 User Login

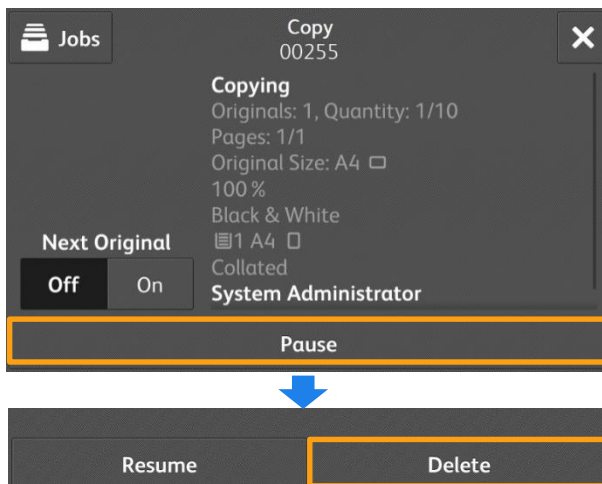


**Copy**



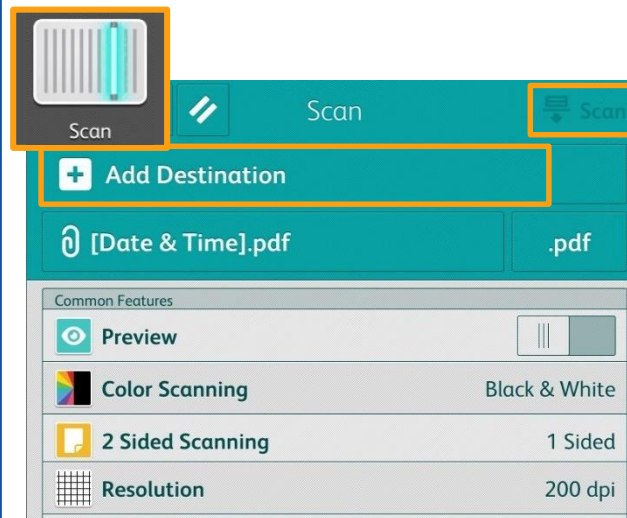
At [Copy] menu, select copy features, then press [Start].

**Stop Copy**



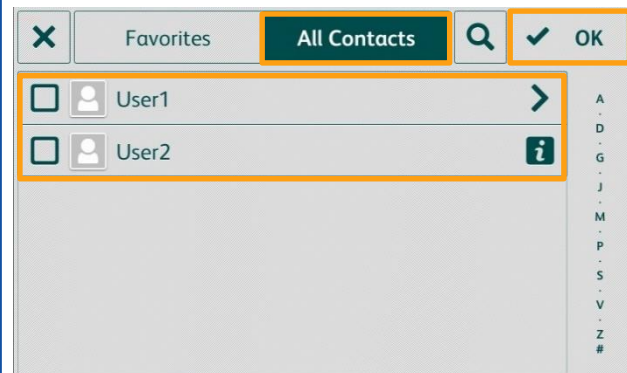
Select [Pause], then press [Delete].

**Scan**



Select [Add Destination] to store the data in. Then select scan features and press [Scan].

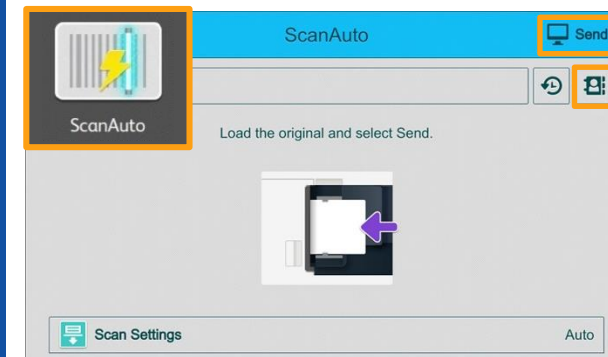
**Add Destination**



Select recipient from the [All Contacts] list. Click [OK], then select scan features and press [Scan].

**Scan Auto**

Scan Auto can skip the blank pages and rotate the pages into correct orientation automatically.



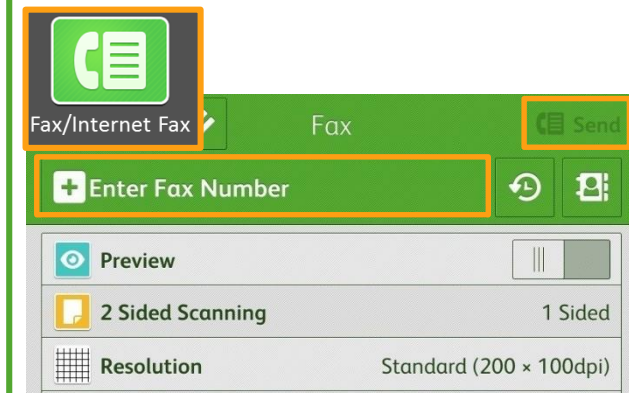
Select recipient from the [Enter] list, then press [Send].

**Address Book**



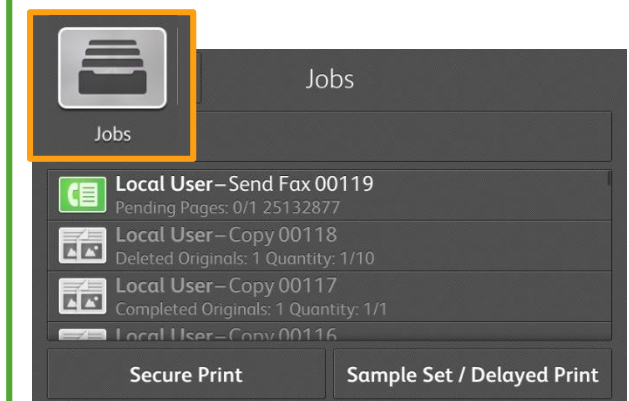
Select recipient from the [All Contacts] list.

**Fax**



Select recipient from the [Enter] list. Click [OK], then select fax features and press [Send].

**Check Job Status**



After fax transmission, select [Jobs] to verify the job completion status.