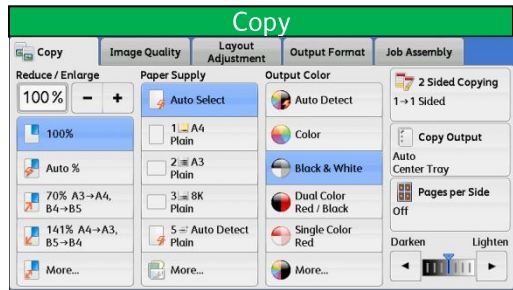
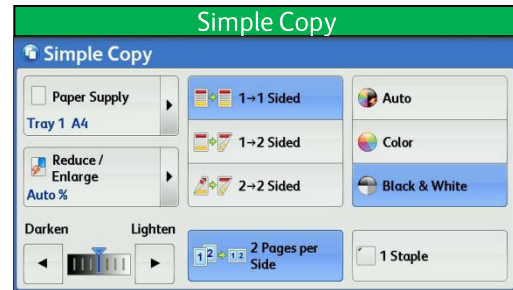


- No. and Component**
- 1 <Services Home> button
 - 2 Touch screen
 - 3 <Log In/Out> button
 - 4 <Job Status> button
 - 5 <Machine Status> button
 - 6 <Power Saver> button
 - 7 <Interrupt> button
 - 8 <Clear All> button
 - 9 <Stop> button
 - 10 <Start> button

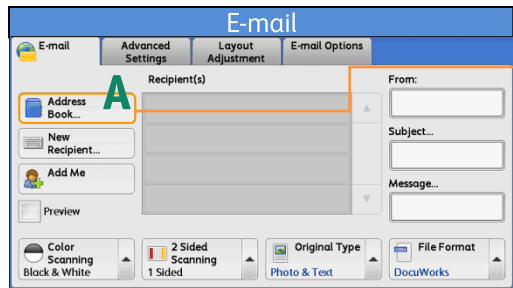
- 11 <Main Power> indicator
- 12 <Error> indicator
- 13 <Data> indicator
- 14 <Speed Dial> button
- 15 <C (Clear)> button
- 16 <Dial Pause> button
- 17 Numeric keypad
- 18 <Custom Button 1>
- 19 <Custom Button 2>
- 20 <Custom Button 3>
- 21 USB memory slot
- 22 One-touch panels
- 23 One-touch buttons



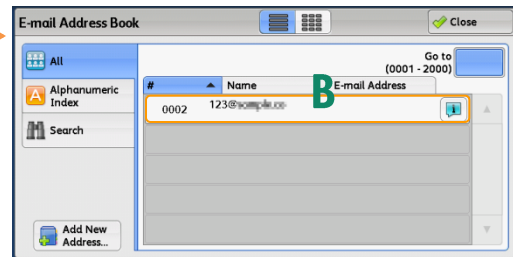
At [Copy] menu, select copy features. Press <Start> button.



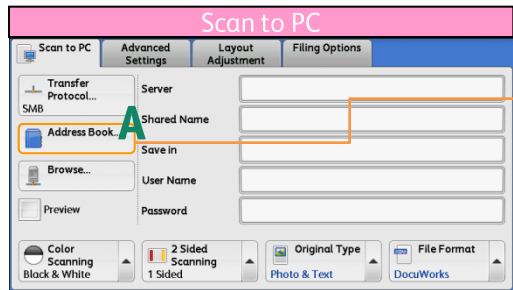
At [Simple Copy] menu, select the basic copy features. Press <Start> button.



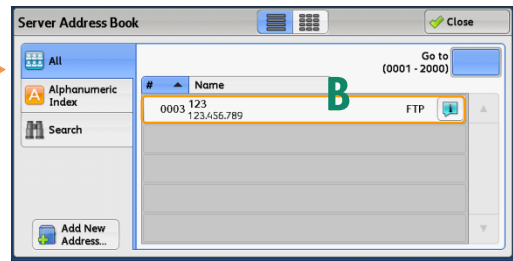
Select a recipient from the address list. Click [Close] to finish.



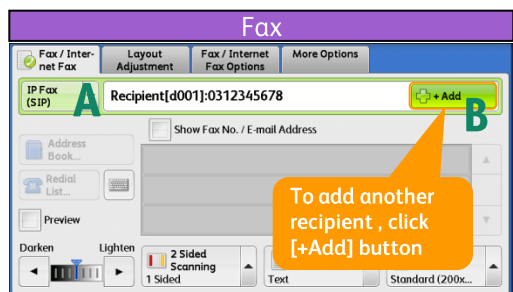
Select Scan features. Press <Start> button.



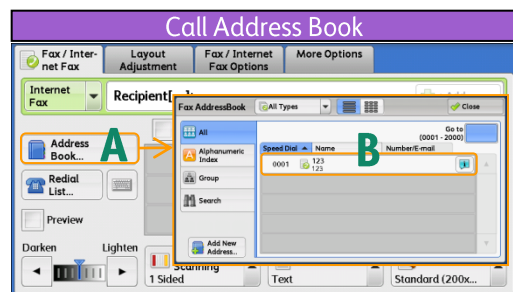
Select the destination to store the data in. Click [Close] to finish.



Select Scan features. Press <Start> button.



Dial fax numbers using the Control Panel. Select the features. Press <Start> button.



Press [Address Book]. Press to select fax number. Press <Start> button.