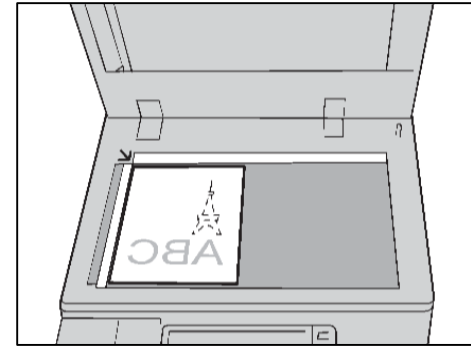
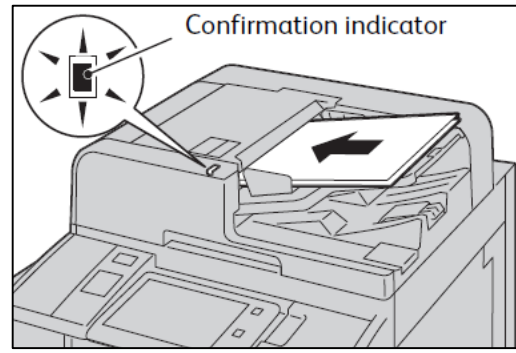


QUICK REFERENCE FOR ApeosPort-VII C7788/C6688/C5588



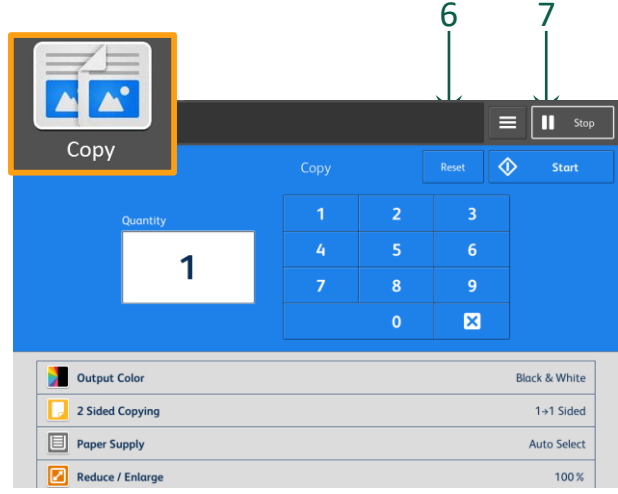
- No. and Component**
- 1 <Interrupt> button
 - 2 <Stop> button
 - 3 <Power Saver> button
 - 4 <Services Home> button
 - 5 <Job Status> button
 - 6 <Reset> button
 - 7 <Start> button



OR



Copy

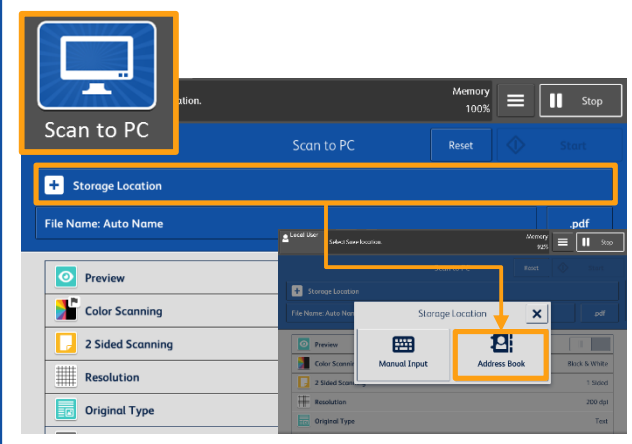


At [Copy] menu, select copy features, then press [Start].

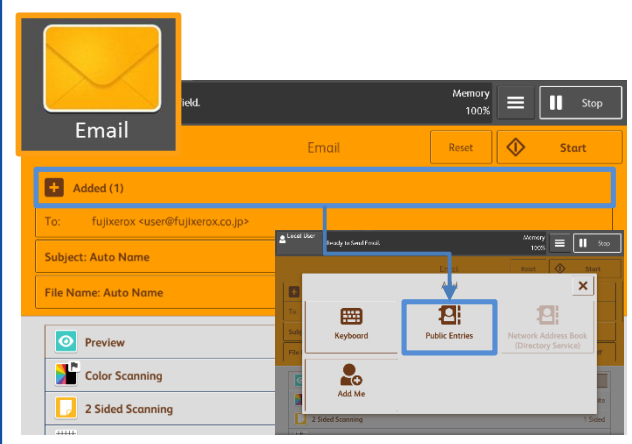


Select [Display Other Features] to find more copy features.

Scan



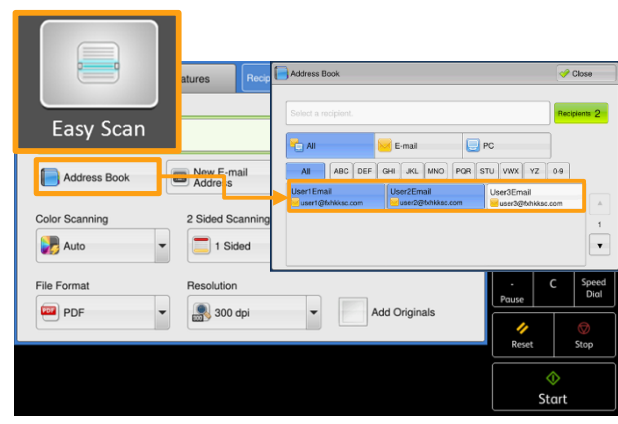
Select [Storage Location] to store the data in. Click [Close], then select scan features and press [Start].



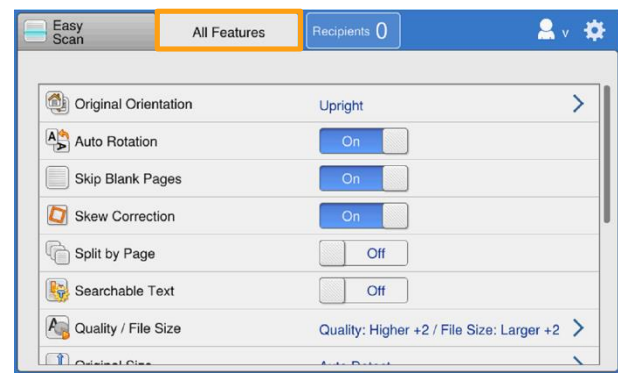
Select recipient from the [Add] list. Click [Close], then select scan features and press [Start].

Easy Scan

Easy Scan can skip the blank pages and rotate the pages into correct orientation automatically.

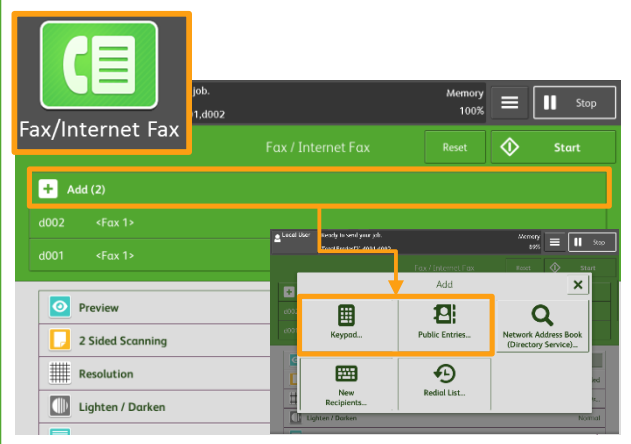


Select recipient from the [Address Book] list. Click [Close], then press [Start].

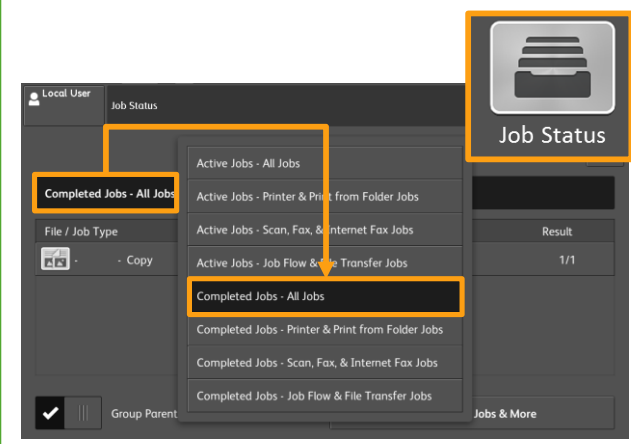


Select [All Features] to find more scan features.

Fax



Select recipient from the [Add] list. Click [Close], then select fax features and press [Start].



After fax transmission, select [Job Status], and then select [Completed Jobs - All Jobs] to verify the job completion status.

For assistance, please call 2513 2513.