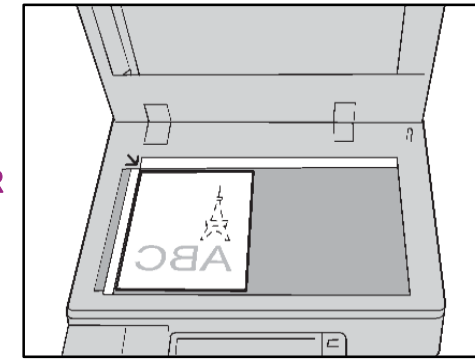
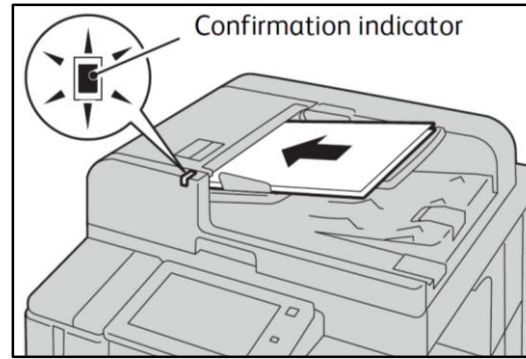




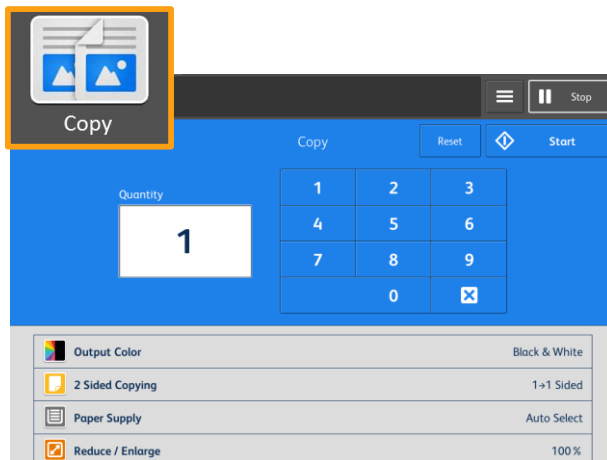
- No. and Component**
- 1 <Interrupt> button
 - 2 <Stop> button
 - 3 <Power Saver> button
 - 4 <Services Home> button
 - 5 <Job Status> button
 - 6 <Reset> button
 - 7 <Start> button



OR



Copy

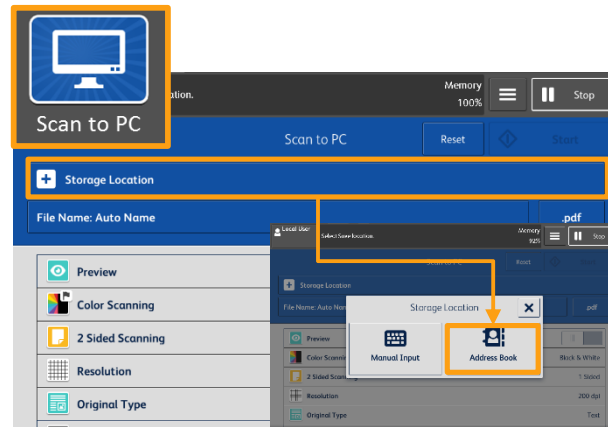


At [**Copy**] menu, select copy features, then press [**Start**].

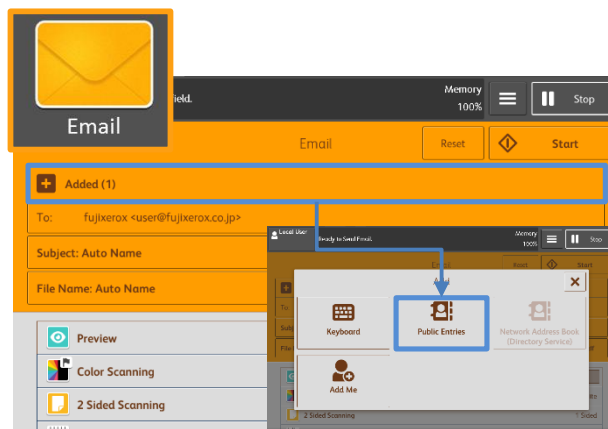


Select [**Display Other Features**] to find more copy features.

Scan



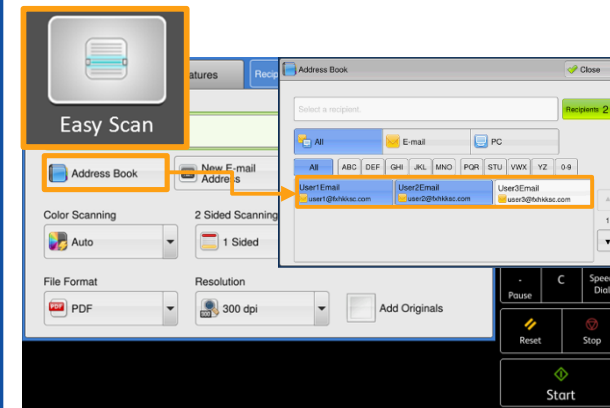
Select [**Storage Location**] to store the data in. Click [**Close**], then select scan features and press [**Start**].



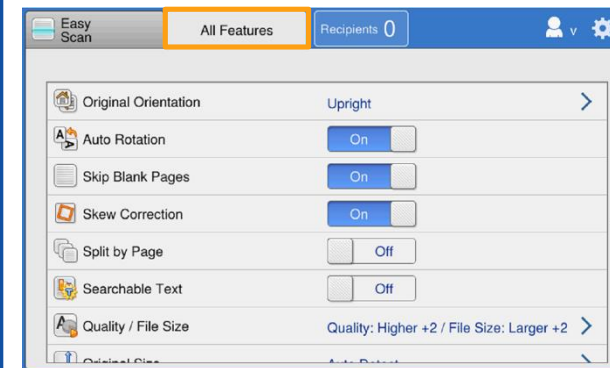
Select recipient from the [**Add**] list. Click [**Close**], then select scan features and press [**Start**].

Easy Scan

Easy Scan can skip the blank pages and rotate the pages into correct orientation automatically.

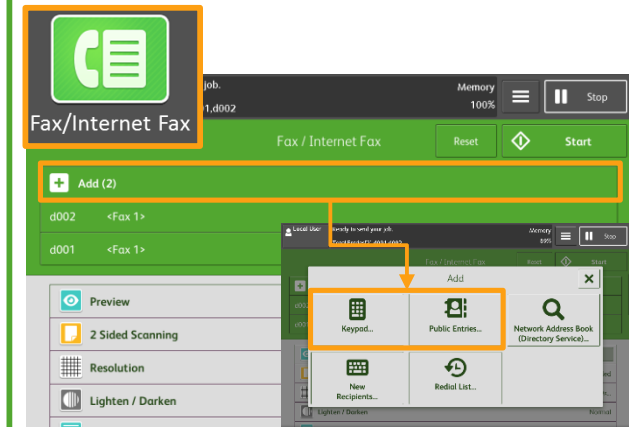


Select recipient from the [**Address Book**] list. Click [**Close**], then press [**Start**].



Select [**All Features**] to find more scan features.

Fax



Select recipient from the [**Add**] list. Click [**Close**], then select fax features and press [**Start**].



After fax transmission, select [**Job Status**], and then select [**Completed Jobs - All Jobs**] to verify the job completion status.