



QUICK REFERENCE FOR DocuCentre-IV C2265/C2263



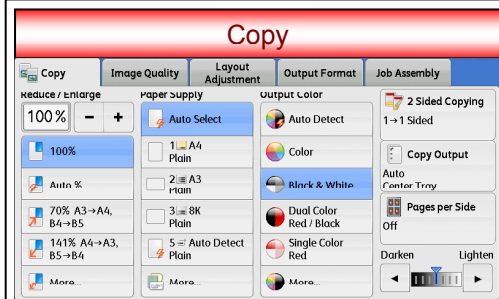
Placing Original

Load the document Face Down when using Document Glass

Load the document Face Up when using Document Feeder

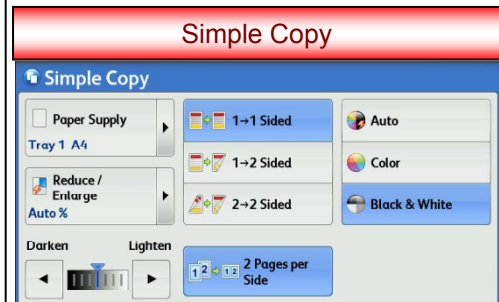


For assistance with Service/Faults/Supplies/Toner-Network/Print/Copier/Scan Features.
 Phone: 2513-2513 and quote the Serial Number
 Online Support Assistant
www.fujixerox.com.hk

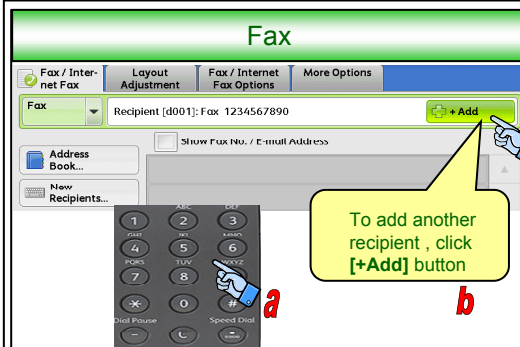


At {Copy} menu, select different copy features. Press <Start> button.

< OR >

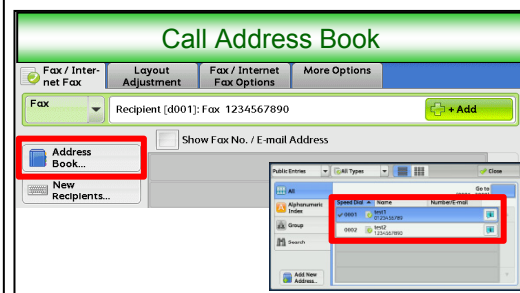


At {Simple Copy} menu, select the basic copy features. Press <Start> button.

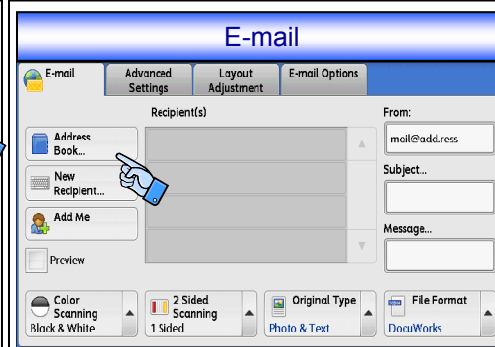


Dial fax numbers using the Control Panel. Select the features. Press <Start> button.

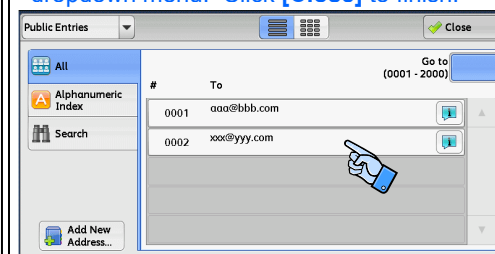
< OR >



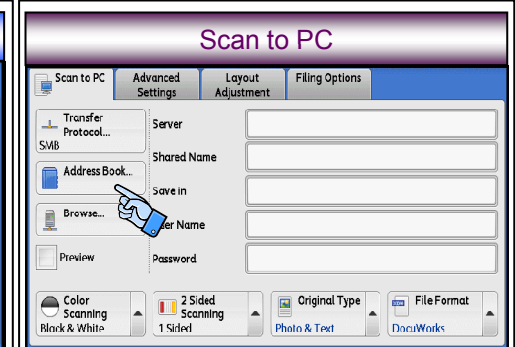
Press [Address Book]. Press to select fax number. To specify multiple recipients, specify the recipients one after another. Select fax features. Press <Start> button.



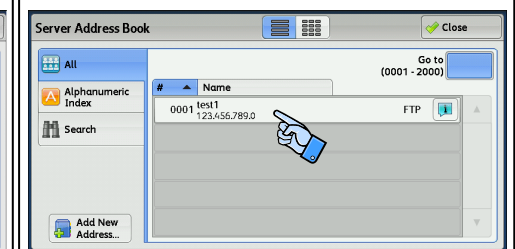
Select a recipient from the address list, and then select [To], [Cc], or [Bcc] from the dropdown menu. Click [Close] to finish.



Select Scan features. Press <Start> button.



Select the destination to store the data in. Click [Close] to finish.



Select Scan features. Press <Start> button.